

Proposed Valley County Waterways Ordinance 19-05

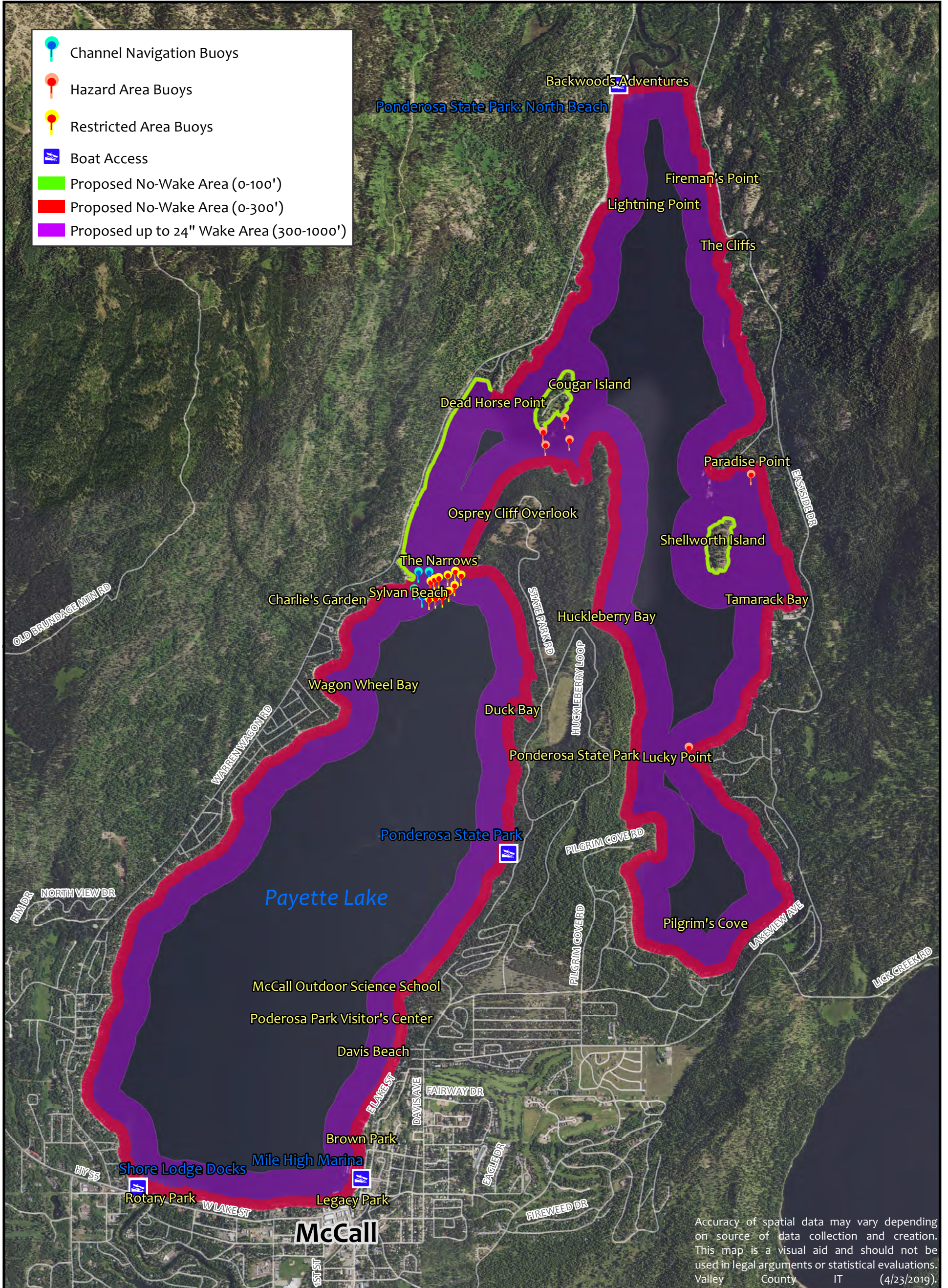
PAYETTE LAKE

Per the Idaho Department of Lands, Payette Lake average high water elevation is 4,992.59 feet above sea level. The average high water elevation mark is accepted by the City of McCall as the official area boundary for Payette Lake and is referred to for parks management and city planning. Average high water elevation is maintained for the majority of the boating season.



0.25
Miles

On the date this aerial imagery was collected in June of 2015, Payette Lake was recorded at average high water elevation. This map of Payette Lake was created at a geographic scale of 1:30,000.



Accuracy of spatial data may vary depending on source of data collection and creation. This map is a visual aid and should not be used in legal arguments or statistical evaluations. Valley County IT (4/23/2019).