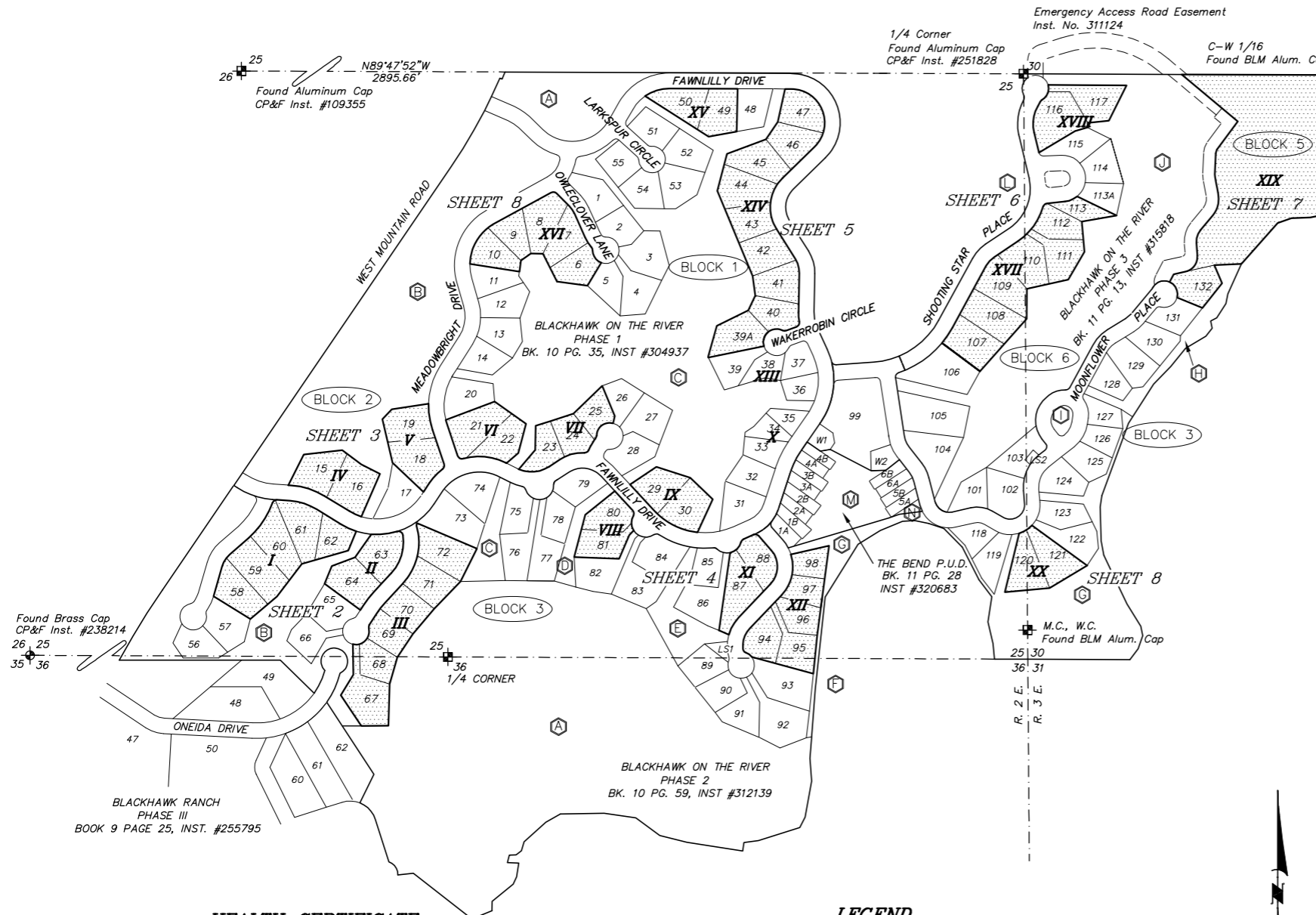


# BLACKHAWK ON THE RIVER (1, 2, and 3)

**A REPLAT OF PORTIONS OF BLACKHAWK PLANNED UNIT DEVELOPMENT**  
 Located in S 1/2 of Section 25 and the N 1/2 of Section 36, T.18N., R.2E.,  
 and in the SW 1/4 of Section 30. T.18N., R.3E., B.M.  
 Valley County, Idaho



**NOTES:**  
 1. This Plat is a reinstatement of lots approved by Valley County as CUP 05-03, memorialized as Blackhawk on the River Phases 1, 2 and 3, recorded in 2006 as Instrument Numbers 304937, 312139, and 315818, Records of Valley County, Idaho. The Blocks shown on this plat were approved as Valley County PUD 13-01. They were platted by Blackhawk Planned Unit Development recorded in 2014 as Instrument Number 388600.

2. All utilities have been installed at this time.  
 3. All properties, easements, and utilities shown on this Plat are subject to and governed by the provisions of the General Covenants, Conditions and Restrictions for Blackhawk on the River, Valley County, Idaho ("General CC&Rs"). This document may be amended and supplemented, and is recorded with the Office of Recorder of Valley County, Idaho, as Instrument Numbers 305030, 305031, 307748, 312141, 315820, 353301 as amended by 386846.

4. Preliminary to the filing of a formal Supplemental Declaration, and pursuant to the Declaration of Conditions, Covenants, and Restrictions for Blackhawk on the River Subdivision dated 11 April, 2006 (Valley County Instrument #307748), this Final Plat and The McCall Associates, LLC--as Grantor--as of the effective date here ascribed, do hereby declare and provide for the annexation of Blackhawk on the River Phase III (3) and all of the previously unplatted portions of Blackhawk on the River Phases I and II (1 and 2). Therefore, these officially annexed parcels within Blackhawk on the River Subdivision become a party and subject to the aforementioned April 11, 2006 Declaration of Conditions, Covenants and Restrictions for Blackhawk on the River Subdivision--with all rights and obligations thereunto pertaining.

5. All roads and road rights of way depicted on this plat are private. Valley County shall have no responsibility for the costs of the design, construction, maintenance, upkeep, repair or replacement of said roads. Such roads are owned and maintained by the Blackhawk on the River Owners Association, as is further provided in the Private Road Declarations of Blackhawk on the River Phases 1, 2, and 3, which have been recorded with the Office of Recorder of Valley County, as Instrument Numbers 305029, 321143 and 315822.

6. The repair and maintenance of all drainage facilities and improvements located within the Drainage Easements depicted on this Final Plat shall be the obligation of the Blackhawk on the River Association.

7. There shall be no further division of any Lot depicted on this Plat, as provided in the General Declaration and without prior approval from the Health Authority.

8. No additional domestic water supplies shall be installed beyond the water system approved in sanitary restriction release.

9. All easements depicted on this Plat are further defined and described in the General Declaration. Utility easements are dedicated to Public Utilities.

10. This Plat is not within an irrigation district as defined in Idaho Code 31-3805 and the requirements in I.C. 31-3805 are not applicable.

11. Flood zones shown on this plat are per FEMA FIRM panel #16085C 0982 and 0985 Effective February 1, 2019.  
 Flood Zones: Zone X, Zone A  
 Base Flood Elevation: N/A  
 Flood Zones are subject to change by FEMA and all land within a floodway or floodplain is regulated by Title 9 and Title 11 of the Valley County Code.

12. The wetland areas shown on this plat are subject to regulation by the U.S. Army Corps of Engineers. Any proposed change must be submitted to, reviewed and approved by the USACE prior to work being done.

**HEALTH CERTIFICATE**

Sanitary restrictions as required by Idaho Code Title 50, Chapter 13 have been satisfied according to the letter to be read on file with the County Recorder or his agent listing the conditions of approval. Sanitary restrictions may be re-imposed in accordance with section 50-1326, Idaho Code, by the issuance of a certificate of disapproval.

DISTRICT HEALTH DEPARTMENT, EHS

**LEGEND**

- ⊕ FOUND BRASS CAP MONUMENT
- ⊕ FOUND ALUMINUM CAP MONUMENT
- ⊕ OPEN SPACE PARCEL
- Ⓛ BLOCK NUMBER (PER BHOR PHASES 1, 2, AND 3)
- Ⓛ BLOCK NUMBER PER BLACKHAWK PUD

SCALE: 1" = 400'  
 Bearings Based on Blackhawk On The River Phase 1, Book 10 Page 35 of Plats

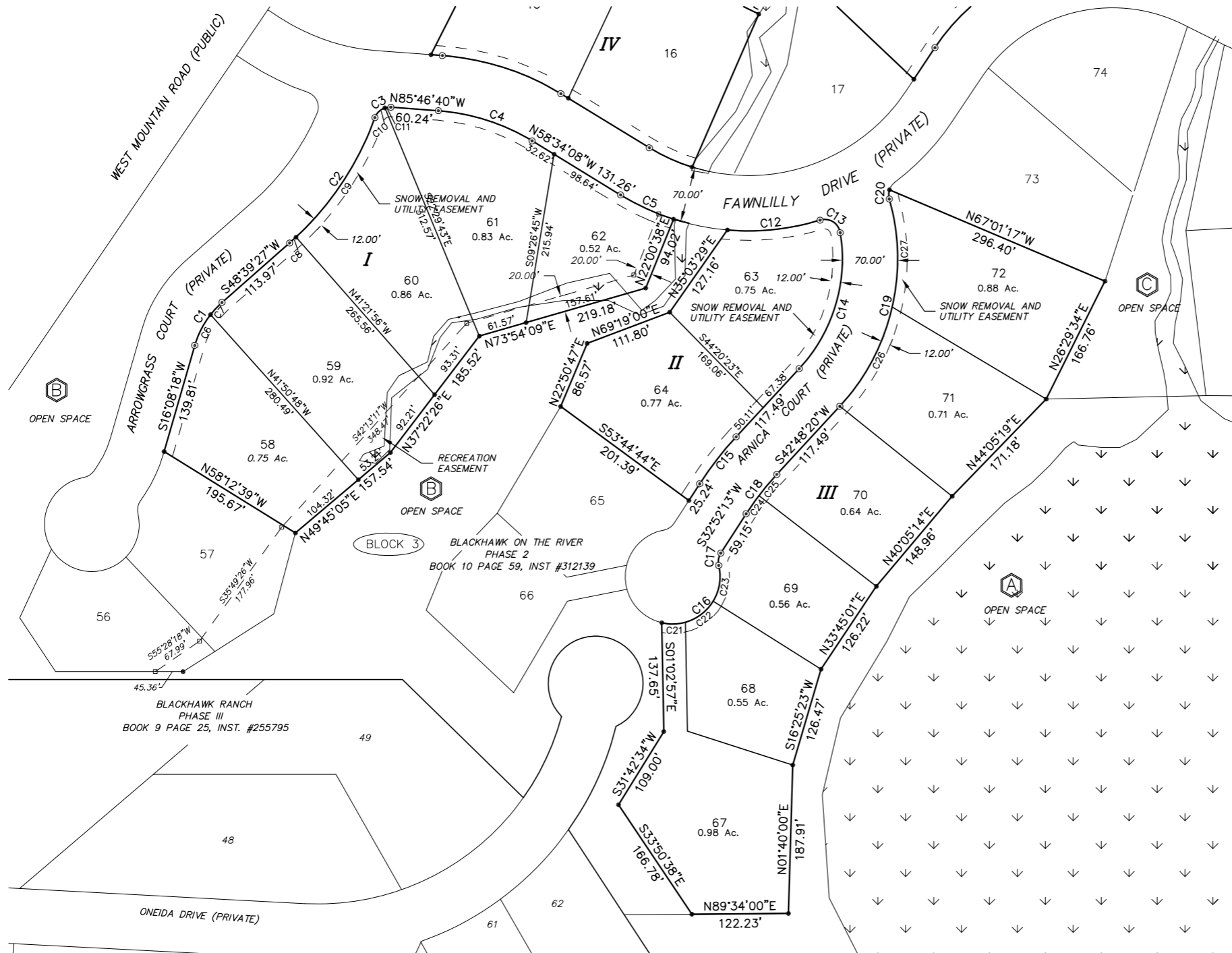
**SECESH ENGINEERING, INC.**

McCall, Idaho

# BLACKHAWK ON THE RIVER (1, 2, and 3)

**A REPLAT OF PORTIONS OF BLACKHAWK PLANNED UNIT DEVELOPMENT**  
 Located in S 1/2 of Section 25 and the N 1/2 of Section 36, T.18N., R.2E.,  
 and in the SW 1/4 of Section 30. T.18N., R.3E., B.M.  
 Valley County, Idaho

SEE SHEET 3



CURVE TABLE						
CURVE	RADIUS	LENGTH	TANGENT	DELTA	BEARING	CHORD
C1	115.00	65.27	33.54	32°31'08"	S32°23'52"W	64.40
C2	385.00	193.98	99.09	28°52'03"	N34°13'25"E	191.93
C3	20.00	25.98	15.19	74°25'56"	S57°00'22"W	24.19
C4	265.00	125.84	64.13	27°12'32"	N72°10'24"W	124.67
C5	310.00	73.94	37.14	13°39'54"	S65°24'05"E	73.76
C6	115.00	44.05	22.30	21°56'55"	S27°06'46"W	43.78
C7	115.00	21.22	10.64	10°34'14"	S43°22'20"W	21.19
C8	385.00	10.92	5.46	1°37'31"	N47°50'41"E	10.92
C9	385.00	183.05	93.29	27°14'32"	N33°24'40"E	181.34
C10	20.00	18.28	9.84	52°22'48"	S45°58'48"W	17.65
C11	20.00	7.70	3.90	22°03'07"	S83°11'46"W	7.65
C12	310.00	118.63	60.05	21°55'32"	N83°54'31"E	117.91
C13	20.00	34.15	22.94	97°49'45"	N58°08'22"W	30.15
C14	205.00	186.16	100.05	52°01'50"	N16°47'26"E	179.83
C15	435.00	75.43	37.81	9°56'07"	S37°50'17"W	75.34
C16	60.00	122.43	97.75	116°55'00"	N44°45'40"E	102.27
C17	20.00	16.26	8.61	46°34'03"	S09°35'12"W	15.81
C18	365.00	63.29	31.73	9°56'07"	S37°50'17"W	63.21
C19	275.00	281.96	154.78	58°44'46"	N13°25'57"E	269.77
C20	20.00	11.78	6.07	33°44'58"	S00°56'03"W	11.61
C21	60.00	30.32	15.49	28°57'19"	N88°44'31"E	30.00
C22	60.00	44.99	23.61	42°57'45"	N52°46'59"E	43.94
C23	60.00	47.12	24.85	44°59'56"	N08°48'08"E	45.92
C24	365.00	28.14	14.08	4°25'01"	S35°04'44"W	28.13
C25	365.00	35.15	17.59	5°31'06"	S40°02'47"W	35.14
C26	275.00	143.73	73.55	29°56'47"	N27°49'57"E	142.10
C27	275.00	138.23	70.61	28°48'00"	N01°32'26"W	136.78



SCALE: 1" = 100'

**LEGEND**

- ⊙ FOUND 5/8" REBAR
- FOUND 1/2" REBAR
- ◊ ANGLE POINT - NOTHING SET
- ⬡ OPEN SPACE PARCEL
- Ⓚ BLOCK 6 BLOCK NUMBER (PER BHOR PHASES 1, 2, AND 3)
- VII BLOCK NUMBER PER BLACKHAWK PUD
- EASEMENT LINE
- ⬇ WETLANDS

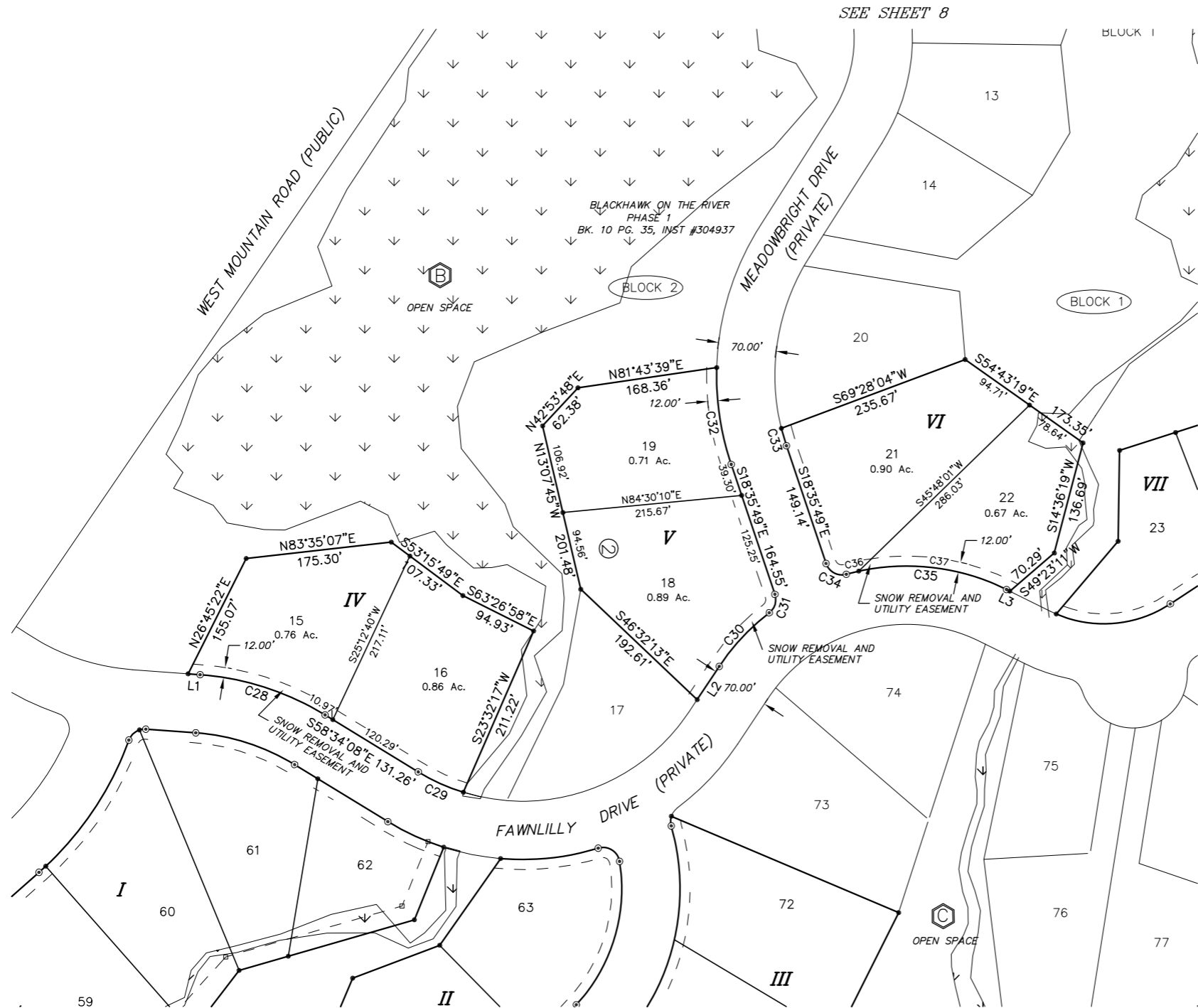
**SECESH ENGINEERING, INC.**

McCall, Idaho

SHEET NO. 2 OF 9

# BLACKHAWK ON THE RIVER (1, 2, and 3)

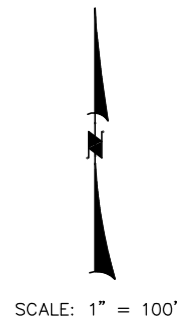
**A REPLAT OF PORTIONS OF BLACKHAWK PLANNED UNIT DEVELOPMENT**  
 Located in S 1/2 of Section 25 and the N 1/2 of Section 36, T.18N., R.2E.,  
 and in the SW 1/4 of Section 30. T.18N., R.3E., B.M.  
 Valley County, Idaho



CURVE TABLE						
CURVE	RADIUS	LENGTH	TANGENT	DELTA	BEARING	CHORD
C28	335.00	159.09	81.07	27°12'32"	N72°10'24"W	157.60
C29	240.00	59.53	29.92	14°12'43"	S65°40'30"E	59.38
C30	270.00	88.43	44.61	18°45'54"	S43°00'13"W	88.03
C31	20.00	24.78	14.26	70°58'59"	N16°53'41"E	23.22
C32	335.00	118.03	59.64	20°11'16"	S08°30'11"E	117.43
C33	265.00	21.79	10.90	4°42'41"	S16°14'29"E	21.78
C34	20.00	30.35	18.96	86°56'07"	S62°03'53"E	27.52
C35	270.00	197.62	103.47	41°56'11"	N84°33'50"W	193.24
C36	270.00	15.45	7.73	3°16'45"	S76°06'26"W	15.45
C37	270.00	182.17	94.70	38°39'27"	N82°55'28"W	178.73

LINE TABLE		
LINE	LENGTH	BEARING
L1	14.50	S85°46'40"E
L2	47.96	N33°37'16"E
L3	4.53	S63°35'45"E

SEE SHEET 4



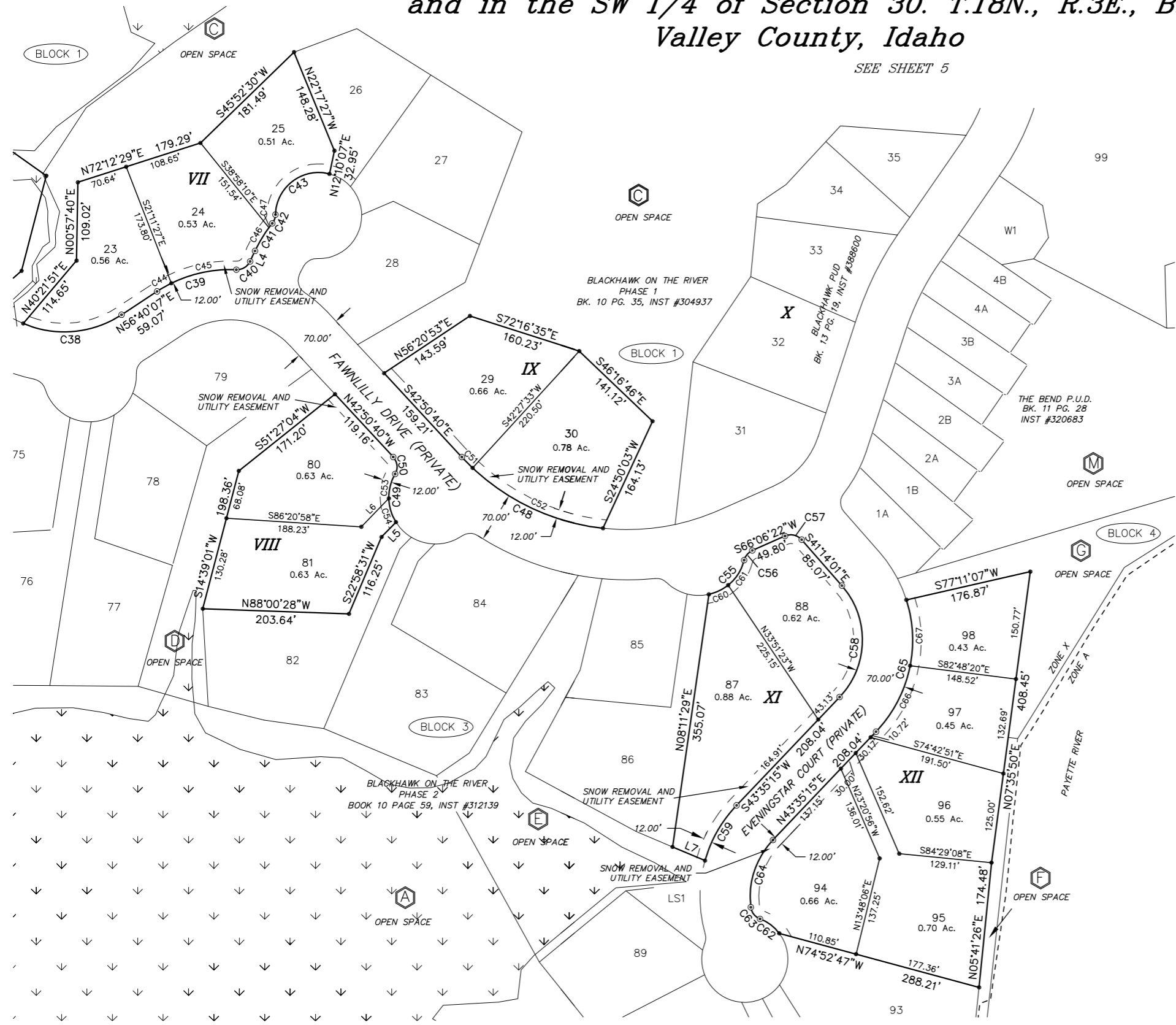
**LEGEND**

- FOUND 5/8" REBAR
- FOUND 1/2" REBAR
- ANGLE POINT - NOTHING SET
- ⊞ OPEN SPACE PARCEL
- Ⓚ BLOCK NUMBER (PER BHOR PHASES 1, 2, AND 3)
- Ⓛ BLOCK NUMBER PER BLACKHAWK PUD
- - - EASEMENT LINE
- ∨ ∨ ∨ WETLANDS

# BLACKHAWK ON THE RIVER (1, 2, and 3)

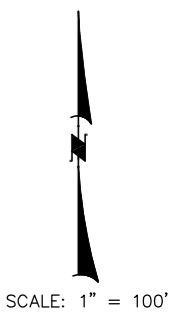
**A REPLAT OF PORTIONS OF BLACKHAWK PLANNED UNIT DEVELOPMENT**  
 Located in S 1/2 of Section 25 and the N 1/2 of Section 36, T.18N., R.2E.,  
 and in the SW 1/4 of Section 30. T.18N., R.3E., B.M.  
 Valley County, Idaho

SEE SHEET 5



CURVE TABLE						
CURVE	RADIUS	LENGTH	TANGENT	DELTA	BEARING	CHORD
C38	145.00	143.21	78.06	56°35'19"	N84°57'46"E	137.46
C39	185.00	116.43	60.21	36°03'30"	S74°41'52"W	114.52
C40	20.00	23.62	13.40	67°39'22"	N58°53'56"E	22.27
C41	185.00	45.40	22.81	14°03'38"	S32°06'03"W	45.29
C42	20.00	13.20	6.85	37°49'45"	N20°13'00"E	12.97
C43	60.00	108.24	75.92	103°21'51"	S52°59'03"W	94.15
C44	185.00	22.92	11.48	7°05'57"	S60°13'05"W	22.91
C45	185.00	93.51	47.77	28°57'34"	S78°14'50"W	92.51
C46	185.00	37.89	19.01	11°44'09"	S30°56'19"W	37.83
C47	185.00	7.51	3.75	2°19'29"	S37°58'08"W	7.51
C48	315.00	225.18	117.64	40°57'28"	S63°19'24"E	220.41
C49	65.00	70.38	39.08	62°02'06"	S01°00'14"E	66.99
C50	20.00	25.43	14.76	72°51'29"	N06°24'55"W	23.75
C51	315.00	21.35	10.68	3°53'03"	S44°47'11"E	21.35
C52	315.00	203.82	105.62	37°04'25"	S65°15'55"E	200.29
C53	65.00	35.58	18.25	31°21'41"	S14°19'59"W	35.14
C54	65.00	34.80	17.83	30°40'25"	S16°41'04"E	34.38
C55	65.00	72.10	40.27	63°33'12"	N45°50'53"E	68.46
C56	20.00	18.16	9.76	52°02'05"	S40°05'20"W	17.55
C57	20.00	25.36	14.71	72°39'37"	N77°33'49"W	23.70
C58	115.00	170.25	105.05	84°49'15"	N01°10'37"E	155.12
C59	185.00	89.50	45.65	27°43'12"	S29°43'39"W	88.63
C60	65.00	30.00	15.27	26°26'39"	N64°24'10"E	29.73
C61	65.00	42.10	21.82	37°06'33"	N32°37'34"E	41.37
C62	60.00	33.89	17.41	32°21'52"	N53°06'38"W	33.44
C63	20.00	21.69	12.05	62°08'33"	S38°13'17"E	20.64
C64	115.00	101.84	54.53	50°44'16"	S18°13'07"W	98.54
C65	185.00	197.56	109.38	61°11'08"	N12°59'40"E	188.31
C66	185.00	104.83	53.87	32°28'04"	N27°21'13"E	103.44
C67	185.00	92.73	47.36	28°43'04"	N03°14'22"W	91.76

LINE TABLE		
LINE	LENGTH	BEARING
L4	16.16	N25°04'14"E
L5	28.79	S44°03'55"W
L6	55.00	N44°03'55"E
L7	49.06	N67°05'17"W



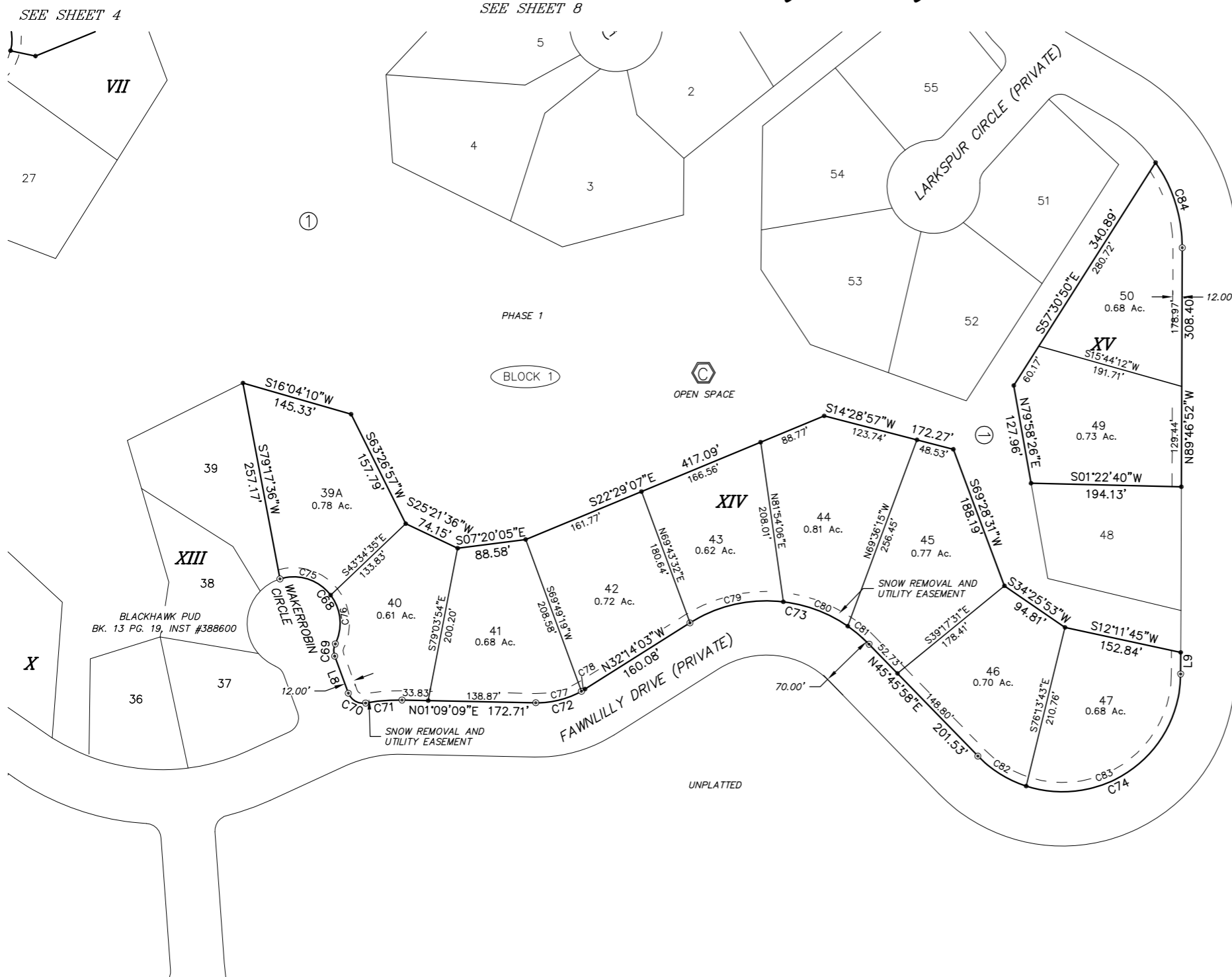
**LEGEND**

- ⊙ FOUND 5/8" REBAR
- FOUND 1/2" REBAR
- ◻ ANGLE POINT - NOTHING SET
- ⊙ OPEN SPACE PARCEL
- (BLOCK 6) BLOCK NUMBER (PER BHOR PHASES 1, 2, AND 3)
- VII BLOCK NUMBER PER BLACKHAWK PUD
- EASEMENT LINE
- ⏚ WETLANDS
- - - FLOOD ZONE BOUNDARY

SEE SHEET 3

# BLACKHAWK ON THE RIVER (1, 2, and 3)

**A REPLAT OF PORTIONS OF BLACKHAWK PLANNED UNIT DEVELOPMENT**  
 Located in S 1/2 of Section 25 and the N 1/2 of Section 36, T.18N., R.2E.,  
 and in the SW 1/4 of Section 30. T.18N., R.3E., B.M.  
 Valley County, Idaho



CURVE TABLE						
CURVE	RADIUS	LENGTH	TANGENT	DELTA	BEARING	CHORD
C68	60.00	139.82	139.71	133°31'01"	S49°33'32"W	110.26
C69	20.00	16.26	8.61	46°34'03"	S86°57'59"E	15.81
C70	20.00	27.96	16.81	80°06'34"	N29°41'43"E	25.74
C71	235.00	47.22	23.69	11°30'43"	S04°36'12"E	47.14
C72	115.00	67.01	34.49	33°23'12"	N15°32'27"W	66.07
C73	185.00	251.85	149.81	78°00'00"	S06°45'57"W	232.85
C74	152.50	360.78	373.20	135°32'49"	N22°00'27"W	282.34
C75	60.00	73.18	41.92	69°52'41"	S17°44'22"W	68.72
C76	60.00	66.64	37.23	63°38'20"	S84°29'53"W	63.27
C77	115.00	61.52	31.51	30°39'01"	N14°10'22"W	60.79
C78	115.00	5.49	2.75	2°44'10"	N30°51'58"W	5.49
C79	185.00	126.06	65.59	39°02'31"	S12°42'47"E	123.64
C80	185.00	89.76	45.78	27°48'01"	S20°42'28"W	88.89
C81	185.00	36.03	18.07	11°09'29"	S40°11'13"W	35.97
C82	152.50	74.08	37.79	27°49'57"	N31°50'59"E	73.35
C83	152.50	286.70	208.80	107°42'53"	N35°55'25"W	246.30
C84	190.00	116.93	60.38	35°15'39"	S72°35'19"W	115.09

LINE TABLE		
LINE	LENGTH	BEARING
L8	50.79	N69°45'00"E
L9	27.90	N89°46'52"W



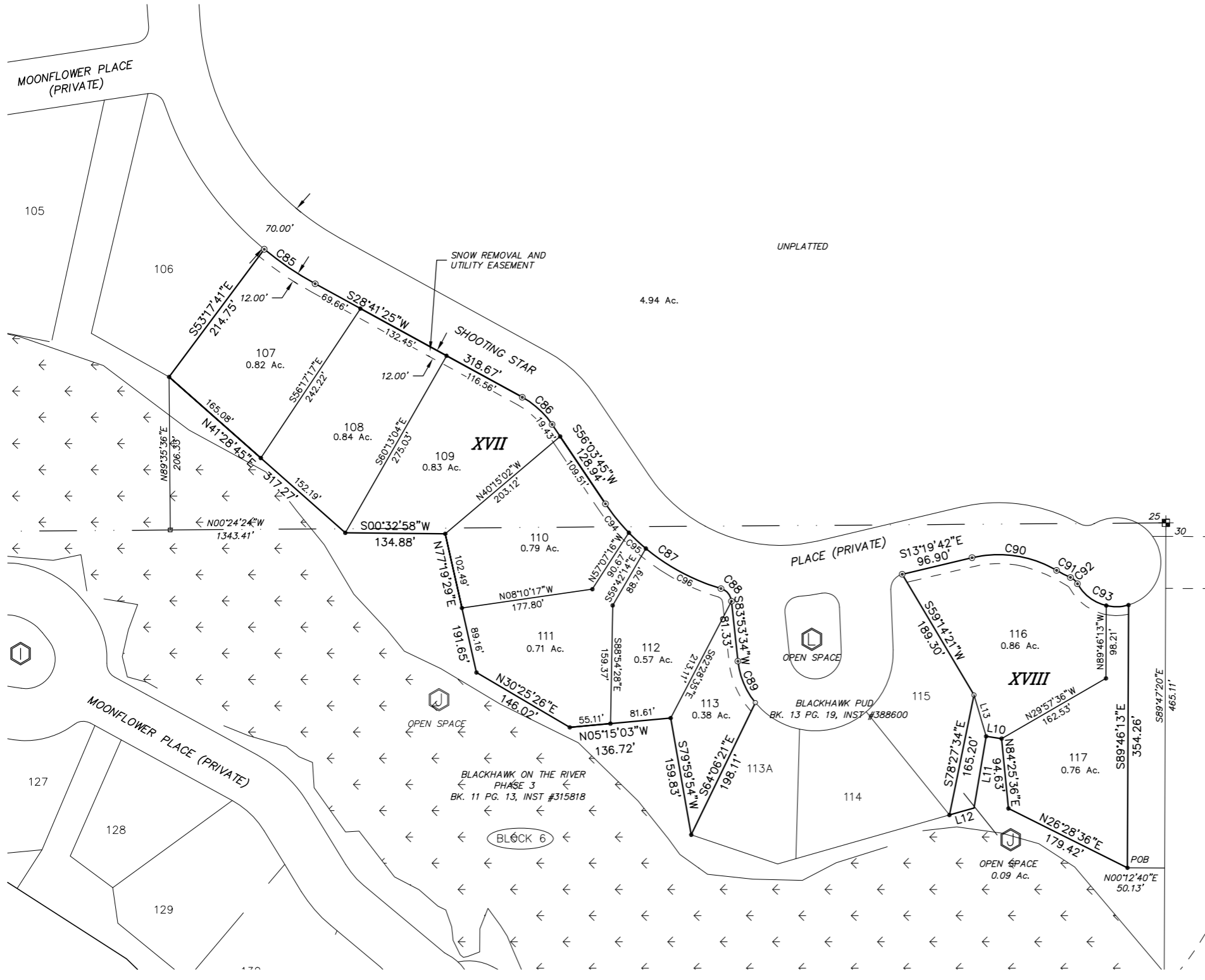
SCALE: 1" = 100'

**LEGEND**

- ⊙ FOUND 5/8" REBAR
- FOUND 1/2" REBAR
- ◻ ANGLE POINT - NOTHING SET
- ⊙ OPEN SPACE PARCEL
- (BLOCK 6) BLOCK NUMBER (PER BHOR PHASES 1, 2, AND 3)
- VII BLOCK NUMBER PER BLACKHAWK PUD
- EASEMENT LINE

# BLACKHAWK ON THE RIVER (1, 2, and 3)

**A REPLAT OF PORTIONS OF BLACKHAWK PLANNED UNIT DEVELOPMENT**  
 Located in S 1/2 of Section 25 and the N 1/2 of Section 36, T.18N., R.2E.,  
 and in the SW 1/4 of Section 30. T.18N., R.3E., B.M.  
 Valley County, Idaho



CURVE TABLE						
CURVE	RADIUS	LENGTH	TANGENT	DELTA	BEARING	CHORD
C85	435.00	83.09	41.67	10°56'37"	N34°09'44"E	82.96
C86	115.00	54.94	28.00	27°22'20"	S42°22'35"W	54.42
C87	285.00	197.09	102.67	39°37'25"	N36°15'02"E	193.19
C88	20.00	23.55	13.35	67°27'14"	S50°09'57"W	22.21
C89	105.00	61.45	31.64	33°32'03"	N67°07'32"E	60.58
C90	155.00	118.21	62.14	43°41'41"	S08°31'08"W	115.36
C91	175.00	20.93	10.48	6°51'11"	N26°56'23"E	20.92
C92	20.00	13.07	6.78	37°26'32"	S42°14'04"W	12.84
C93	60.00	80.43	47.56	76°48'11"	N22°33'14"E	74.54
C94	285.00	50.19	25.16	10°05'28"	N51°01'01"E	50.13
C95	285.00	31.34	15.68	6°18'00"	N42°49'17"E	31.32
C96	285.00	115.56	58.59	23°13'57"	N28°03'19"E	114.77

LINE TABLE		
LINE	LENGTH	BEARING
L10	21.14	N08°22'38"E
L11	98.03	N80°21'04"W
L12	34.36	S15°54'14"E
L13	58.16	N73°35'20"E



SCALE: 1" = 100'

**LEGEND**

- FOUND 5/8" REBAR
- FOUND 1/2" REBAR
- ANGLE POINT - NOTHING SET
- ⊕ OPEN SPACE PARCEL
- Ⓛ BLOCK 6 BLOCK NUMBER (PER BHOR PHASES 1, 2, AND 3)
- Ⓡ BLOCK NUMBER PER BLACKHAWK PUD
- EASEMENT LINE
- ◀ WETLANDS

**SECESH ENGINEERING, INC.**

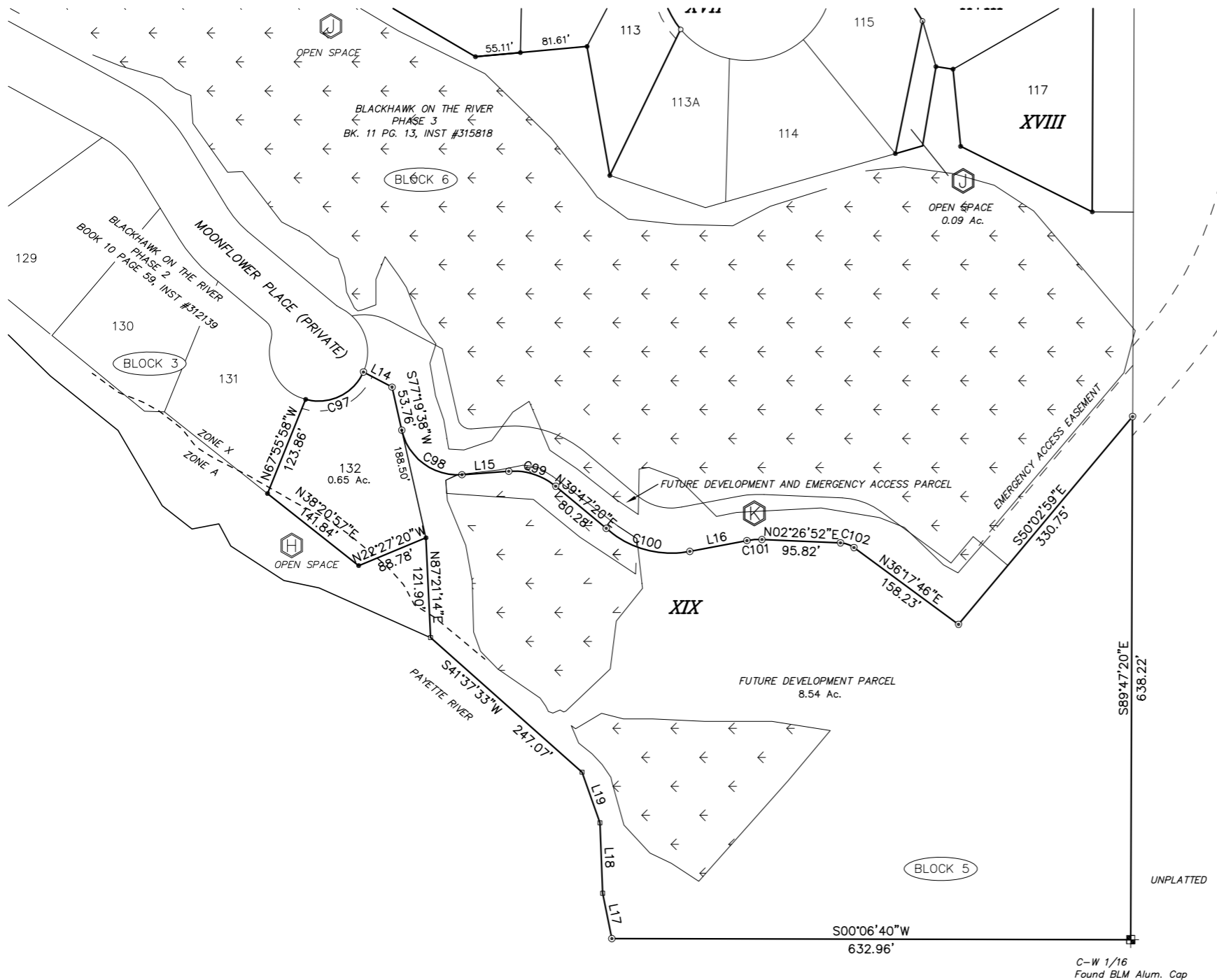
McCall, Idaho

SEE SHEET 7

# BLACKHAWK ON THE RIVER (1, 2, and 3)

**A REPLAT OF PORTIONS OF BLACKHAWK PLANNED UNIT DEVELOPMENT**  
 Located in S 1/2 of Section 25 and the N 1/2 of Section 36, T.18N., R.2E.,  
 and in the SW 1/4 of Section 30. T.18N., R.3E., B.M.  
 Valley County, Idaho

SEE SHEET 6



CURVE TABLE						
CURVE	RADIUS	LENGTH	TANGENT	DELTA	BEARING	CHORD
C97	60.00	84.91	51.32	81°05'00"	N25°23'45"W	78.00
C98	70.00	99.67	60.41	81°35'03"	N36°32'07"E	91.46
C99	80.00	61.50	32.36	44°02'45"	S17°45'58"W	60.00
C100	120.00	109.59	58.95	52°19'24"	N15°25'27"E	105.82
C101	80.00	18.41	9.25	13°11'07"	S04°08'42"E	18.37

LINE TABLE		
LINE	LENGTH	BEARING
L14	39.50	N27°48'12"E
L15	57.29	N04°15'24"W
L16	70.93	N10°44'15"W
L17	56.47	S78°39'46"W
L18	85.92	S87°45'58"W
L19	65.68	S70°28'50"W



SCALE: 1" = 100'

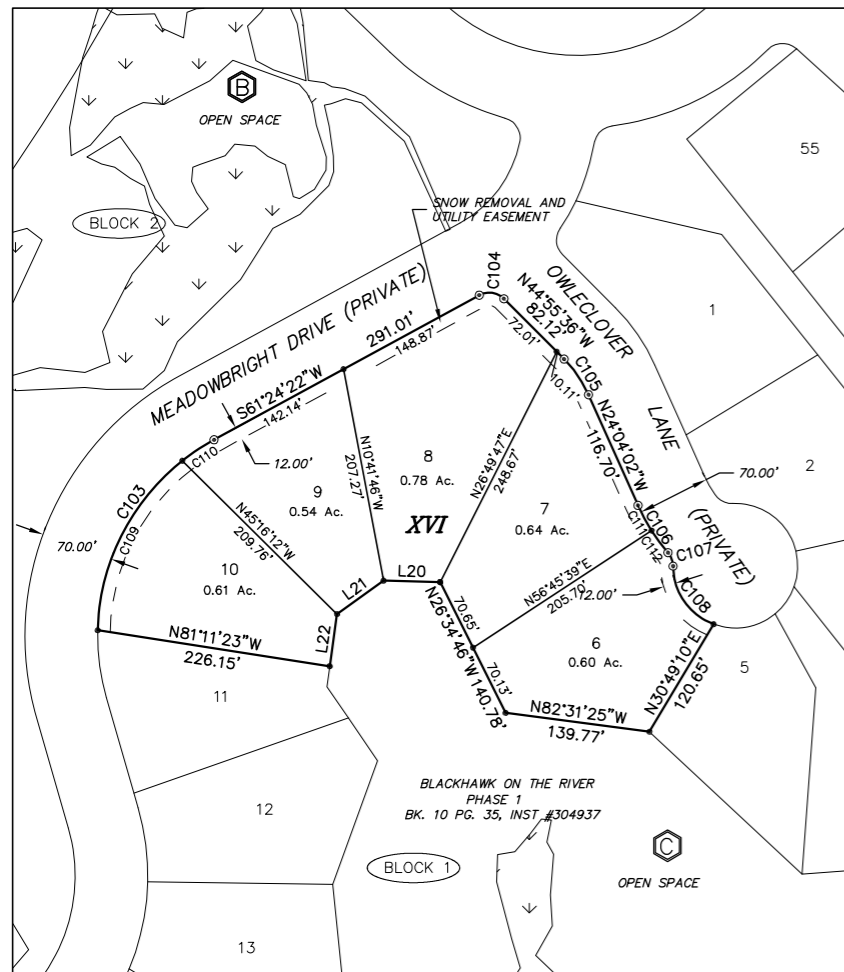
**LEGEND**

- ⊙ FOUND 5/8" REBAR
- FOUND 1/2" REBAR
- ◻ ANGLE POINT - NOTHING SET
- ⊞ OPEN SPACE PARCEL
- Ⓟ BLOCK NUMBER (PER BHOR PHASES 1, 2, AND 3)
- VII BLOCK NUMBER PER BLACKHAWK PUD
- EASEMENT LINE
- ⏏ WETLANDS
- - - FLOOD ZONE BOUNDARY

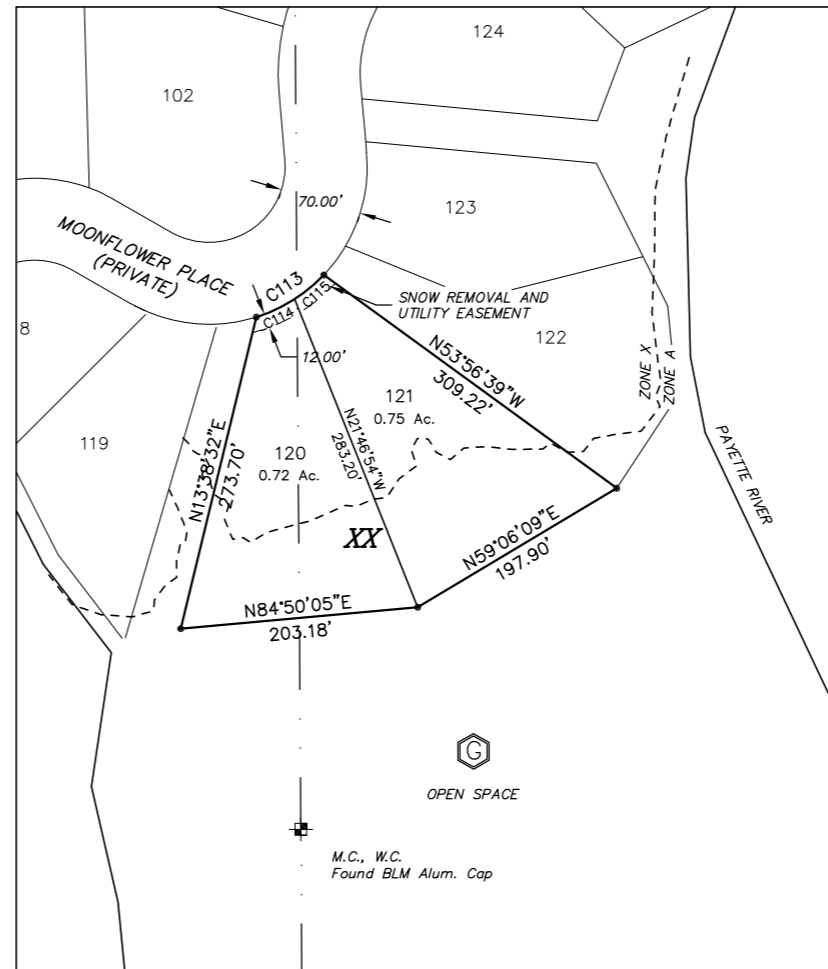
C-W 1/16  
 Found BLM Alum. Cap

# BLACKHAWK ON THE RIVER (1, 2, and 3)

**A REPLAT OF PORTIONS OF BLACKHAWK PLANNED UNIT DEVELOPMENT**  
 Located in S 1/2 of Section 25 and the N 1/2 of Section 36, T.18N., R.2E.,  
 and in the SW 1/4 of Section 30. T.18N., R.3E., B.M.  
 Valley County, Idaho

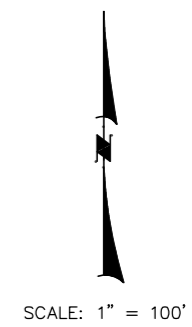


SEE SHEET 3



CURVE TABLE						
CURVE	RADIUS	LENGTH	TANGENT	DELTA	BEARING	CHORD
C103	215.00	225.06	124.07	59°58'34"	S31°25'05"W	214.92
C104	20.00	25.71	14.98	73°40'02"	N81°45'37"W	23.98
C105	115.00	41.87	21.17	20°51'35"	N34°29'49"W	41.64
C106	185.00	54.13	27.26	16°45'56"	S32°27'00"E	53.94
C107	20.00	14.14	7.38	40°29'51"	N20°35'02"W	13.84
C108	60.00	72.47	41.39	69°12'07"	S34°56'10"E	68.14
C109	215.00	188.40	100.73	50°12'24"	S26°32'00"W	182.43
C110	215.00	36.66	18.37	9°46'10"	S56°31'17"W	36.61
C111	185.00	27.63	13.84	8°33'31"	S28°20'47"E	27.61
C112	185.00	26.50	13.27	8°12'25"	S36°43'45"E	26.48
C113	135.00	68.65	35.08	29°08'09"	N58°03'08"E	67.91
C114	135.00	36.22	18.22	15°22'19"	N64°56'03"E	36.11
C115	135.00	32.43	16.29	13°45'50"	N50°21'59"E	32.35

LINE TABLE		
LINE	LENGTH	BEARING
L20	54.61	N88°31'55"W
L21	55.15	S54°18'37"W
L22	50.72	S07°58'28"W



- LEGEND**
- ⊙ FOUND 5/8" REBAR
  - FOUND 1/2" REBAR
  - ANGLE POINT - NOTHING SET
  - ⊕ OPEN SPACE PARCEL
  - Ⓚ BLOCK NUMBER (PER BHOR PHASES 1, 2, AND 3)
  - VII BLOCK NUMBER PER BLACKHAWK PUD
  - - - EASEMENT LINE
  - ↓ ↓ ↓ WETLANDS
  - - - - FLOOD ZONE BOUNDARY



# BLACKHAWK ON THE RIVER (1, 2, and 3)

## A REPLAT OF PORTIONS OF BLACKHAWK PLANNED UNIT DEVELOPMENT Located in S 1/2 of Section 25 and the N 1/2 of Section 36, T.18N., R.2E., and in the SW 1/4 of Section 30. T.18N., R.3E., B.M. Valley County, Idaho

### CERTIFICATE OF OWNER

Portions of Blackhawk Planned Unit Development, located in the south 1/2 of Section 25 and the north 1/2 of Section 36, T.18 N., R.2 E., and the southwest 1/4 of Section 30, T.18 N., R.3 E., B.M., Valley County, Idaho, more particularly described as;

BLOCK I, BLOCK II, BLOCK III, BLOCK IV, BLOCK V, BLOCK VI, BLOCK VII, BLOCK VIII, BLOCK IX, BLOCK XI, BLOCK XII, BLOCK XIV, BLOCK XV, BLOCK XVI, BLOCK XIX, BLOCK XX, a portion of BLOCK XVII, and a portion of BLOCK XVIII.

That portion of BLOCK XVII included is more particularly described as, COMMENCING at the 1/4 corner common to said Sections 25, and 30 as shown on the Plat of Blackhawk Planned Unit Development, filed in Book 13 at Page 19, as Instrument Number 388600, Records of Valley County, Idaho; thence, along the east Section 25, A.) S.0°24'24"E., 1343.41 feet; thence, departing said section line, B.) S.89°35'36"W., 206.33 feet to the southeast corner of said Block XVII, the POINT OF BEGINNING; thence, along boundary of said block,

- 1.) N.53°17'41"W., 214.75 feet; thence,
- 2.) Northeasterly along a curve to the left having a radius of 435.00 feet, an arc length of 83.09 feet, through a central angle of 10°56'37"; and a chord bearing and distance of N.34°09'44"E., 82.96 feet; thence, tangent from said curve,
- 3.) N.28°41'25"E., 318.67 feet to the beginning of a tangent curve; thence,
- 4.) Northeasterly along said curve to the right left having a radius of 115.00 feet, an arc length of 54.94 feet, through a central angle of 27°22'20"; and a chord bearing and distance of N.42°22'35"E., 54.42 feet; thence, tangent from said curve,
- 5.) N.56°03'45"E., 128.94 feet to the beginning of a tangent curve; thence,
- 6.) Northeasterly along said curve to the left having a radius of 285.00 feet, an arc length of 197.10 feet, through a central angle of 39°37'25"; and a chord bearing and distance of N.36°15'02"E., 193.19 feet; thence,
- 7.) Northeasterly along a reverse curve to the right having a radius of 20.00 feet, an arc length of 23.55 feet, through a central angle of 67°27'14"; and a chord bearing and distance of N.50°09'57"E., 22.21 feet; thence, tangent from said curve,
- 8.) N.83°53'34"E., 81.33 feet to the beginning of a tangent curve; thence,
- 9.) Northeasterly along said curve to the left having a radius of 105.00 feet, an arc length of 61.45 feet, through a central angle of 33°32'03"; and a chord bearing and distance of N.67°07'32"E., 60.58 feet; thence,
- 10.) S.64°06'21"E., 198.11 feet; thence,
- 11.) S.79°59'54"W., 159.83 feet; thence,
- 12.) S.5°15'03"W., 136.72 feet; thence,
- 13.) S.30°25'26"W., 146.02; thence,
- 14.) S.77°19'29"W., 191.65; thence,
- 15.) S.0°32'58"W., 134.88; thence,
- 16.) S.41°28'45"W., 317.27 feet to the POINT OF BEGINNING.  
CONTAINING 4.94 Acres, more or less.

That portion of BLOCK XVIII included is more particularly described as, COMMENCING at the 1/4 corner common to said Sections 25 and 30; thence, along the east-west 1/4 section line of said Section 30, A.) S.89°47'20"E., 465.11 feet; thence, departing said 1/4 section line, B.) S.0°12'40"W., 50.13 feet to the northeast corner of said Block XVIII, the POINT OF BEGINNING; thence, along boundary of said block,

- 1.) S.26°28'36"W., 179.42 feet; thence,
- 2.) S.84°25'36"W., 94.63 feet; thence,
- 3.) S.8°22'38"W., 21.14 feet; thence,
- 4.) S.80°21'04"E., 98.03 feet; thence,
- 5.) S.15°54'14"E., 34.36 feet; thence,
- 6.) N.78°27'34"W., 165.20 feet; thence,
- 7.) S.59°14'21"W., 189.30 feet; thence,
- 8.) N.13°19'42"W., 96.90 feet to the beginning of a tangent curve; thence,
- 9.) Northeasterly along said curve to the right having a radius of 155.00 feet, an arc length of 118.21 feet, through a central angle of 43°41'41"; and a chord bearing and distance of N.8°31'08"E., 115.36 feet; thence,
- 10.) Northeasterly along a reverse curve curve to the left having a radius of 175.00 feet, an arc length of 20.93 feet, through a central angle of 6°51'11"; and a chord bearing and distance of N.26°56'23"E., 20.92 feet; thence,
- 11.) Northeasterly along a reverse curve to the right having a radius of 20.00 feet, an arc length of 13.07 feet, through a central angle of 37°26'32"; and a chord bearing and distance of N.42°14'04"E., 12.84 feet; thence,
- 12.) Northeasterly along a reverse curve to the left having a radius of 60.00 feet, an arc length of 80.43 feet, through a central angle of 76°48'12"; and a chord bearing and distance of N.22°33'14"E., 74.54 feet; thence,
- 13.) S.89°46'13"E., 354.26 feet to the POINT OF BEGINNING.  
CONTAINING 1.84 Acres, more or less.

That it is the intention of the undersigned to and they do hereby include said land in this Plat.

McCALL ASSOCIATES LLC

By: \_\_\_\_\_  
BRIAN DICKENS  
Managing Member

### APPROVAL OF THE BOARD OF VALLEY COUNTY COMMISSIONERS

ACCEPTED AND APPROVED THIS \_\_\_\_\_ DAY OF \_\_\_\_\_, 2020, BY THE BOARD OF COUNTY COMMISSIONERS OF VALLEY COUNTY, IDAHO.

\_\_\_\_\_  
CHAIRMAN

### APPROVAL OF THE VALLEY COUNTY PLANNING AND ZONING COMMISSION

ACCEPTED AND APPROVED THIS \_\_\_\_\_ DAY OF \_\_\_\_\_, 2020, BY THE VALLEY COUNTY PLANNING AND ZONING COMMISSION.

\_\_\_\_\_  
CHAIRMAN

### ACKNOWLEDGMENT

STATE OF IDAHO, )  
(ss.  
COUNTY OF \_\_\_\_\_,)

On this \_\_\_\_\_ day of \_\_\_\_\_, 2020, before me, \_\_\_\_\_, a Notary Public in and for said State, personally appeared BRIAN DICKENS, known or identified to me to be the managing member of McCALL ASSOCIATES LLC, the limited liability company that executed the instrument or the person who executed this instrument on behalf of said limited liability company, and acknowledged to me that such limited liability company executed the same.

IN WITNESS WHEREOF, I have hereunto set my hand and seal on the day and year last written above.

\_\_\_\_\_  
NOTARY PUBLIC FOR IDAHO

Residing at: \_\_\_\_\_

My Commission Expires: \_\_\_\_\_

### CERTIFICATE OF COUNTY SURVEYOR

I, GEORGE BOWERS, REGISTERED PROFESSIONAL LAND SURVEYOR FOR VALLEY COUNTY, IDAHO, DO HEREBY CERTIFY THAT I HAVE CHECKED THIS PLAT AND THAT IT COMPLIES WITH THE STATE OF IDAHO CODE RELATING TO PLATS AND SURVEYS.

\_\_\_\_\_  
VALLEY COUNTY SURVEYOR

### CERTIFICATE OF SURVEYOR

I, RALPH MILLER, DO HEREBY CERTIFY THAT I AM A PROFESSIONAL LAND SURVEYOR IN THE STATE OF IDAHO, AND THAT THIS PLAT AS DESCRIBED IN THE "CERTIFICATE OF OWNERS" WAS DRAWN FROM THE FIELD NOTES OF A SURVEY MADE ON THE GROUND UNDER MY DIRECT SUPERVISION AND ACCURATELY REPRESENTS THE POINTS PLATTED HEREON, AND IS IN

RALPH MILLER  
IDAHO NO. 8577



### CERTIFICATE OF COUNTY TREASURER

I, THE UNDERSIGNED, COUNTY TREASURER IN AND FOR THE COUNTY OF VALLEY, STATE OF IDAHO, PER THE REQUIREMENTS OF I.C. 50-1308, DO HEREBY CERTIFY THAT ANY AND ALL CURRENT AND/OR DELINQUENT COUNTY PROPERTY TAXES FOR THE PROPERTY INCLUDED IN THIS SUBDIVISION HAVE BEEN PAID IN FULL. THIS CERTIFICATION IS VALID FOR THE NEXT THIRTY (30) DAYS ONLY.

DATE \_\_\_\_\_

\_\_\_\_\_  
COUNTY TREASURER

SECESH ENGINEERING, INC.

McCall, Idaho

SHEET NO. 9 OF 9