



# Valley County Board of County Commissioners Invites You to Participate in a PUBLIC HEARING

## VAC 21-06 Vacation of a Portion of San Ignacio Way and Associated Utility, Drainage, and Snow Storage Easements

**Applicant:** Julie Urango

**Location:** San Ignacio Way  
Eagle Nest Subdivision No. 2  
NENW Section 20, T.14N, R.4E  
Boise Meridian, Valley County, Idaho

**Project Description:** Julie Urango is requesting a vacation of a portion of a private road right-of-way and the associated easements.

This portion of road was originally a cul-de-sac for the terminus of San Ignacio Way. The road has now been continued into the adjacent EagleNest Subdivision No. 3.

The road right-of-way is located adjacent to Eagle Nest Subdivision No. 2 Lot 12 Block 1, addressed at 17 San Ignacio Way. If vacated the land would become the property of the adjoining owner.

The road is owned and maintained by the Eagle Nest Property Owners Association.

The Planning and Zoning Commission recommended approval on September 9, 2021.

\*\*\*\*\*

Maps are attached.

Previous written and emailed comments will be included in the record and sent to the Board of County Commissioners.

\*\*\*\*\*

**More information, including the application, staff reports, and P&Z minutes, will be posted online:**  
**[www.co.valley.id.us/public-hearing-information](http://www.co.valley.id.us/public-hearing-information)**

## PUBLIC HEARING

**November 1, 2021**

**1:00 p.m.**

**Courthouse Building  
2<sup>nd</sup> Floor  
219 North Main Street  
Cascade, ID**

**Written comments must be received by  
mail, fax, or email no later than  
5:00 p.m., October 25, 2021.**

The meeting is in-person but is also teleconference and web-based. However, we cannot guarantee reliability of the phone system or the internet.

To listen to the hearing, please go to  
[www.co.valley.id.us](http://www.co.valley.id.us)  
and click on link labeled  
"Watch Commissioner Meetings Live"

To comment telephonically or in-person,  
call Doug Miller at 208-382-7100  
prior to 5:00 p.m.  
October 29, 2021

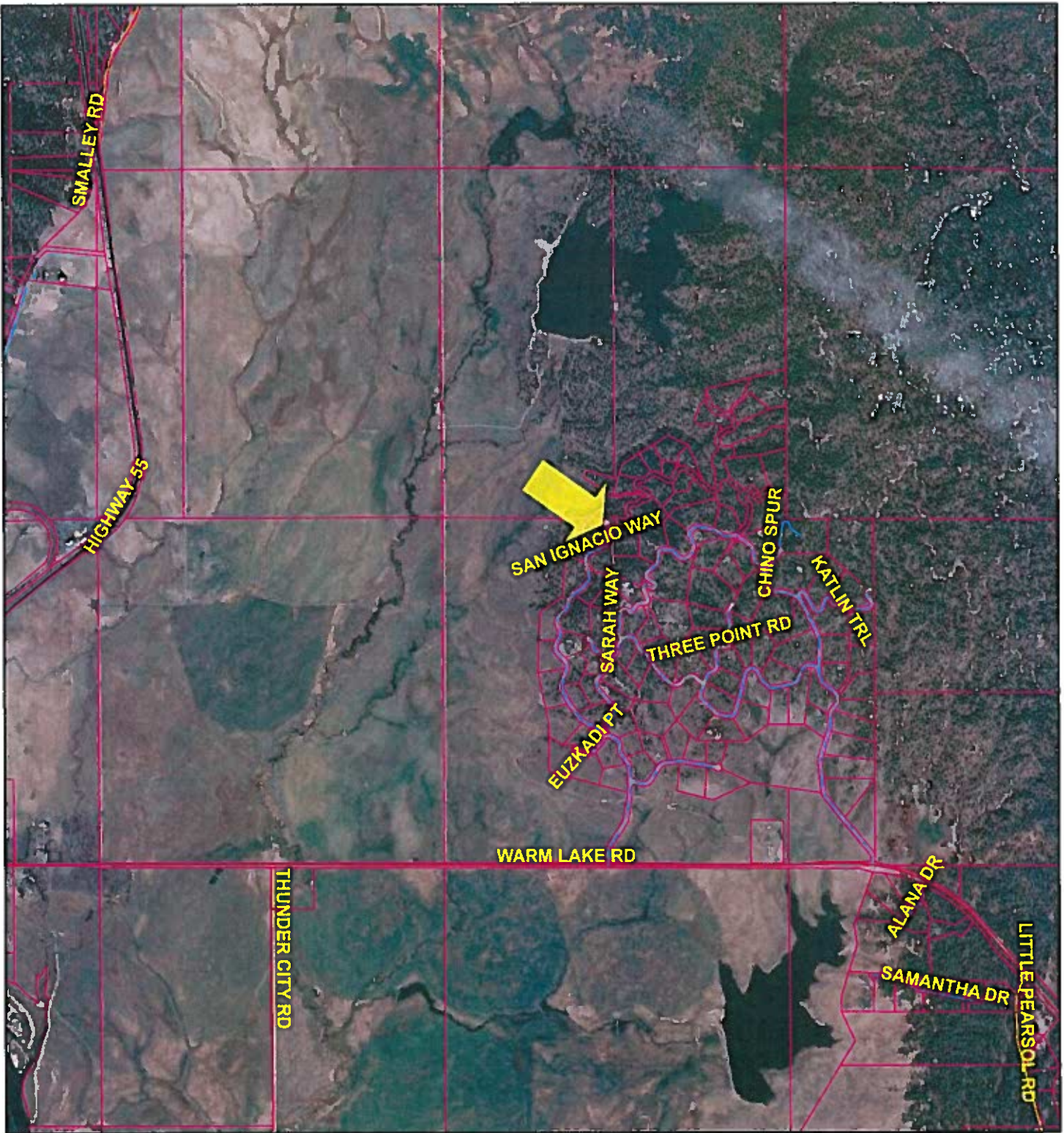
OR

email [dmiller@co.valley.id.us](mailto:dmiller@co.valley.id.us)  
until testimony is opened.

**Direct questions and written comments to:**

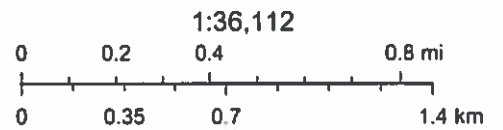
Cynda Herrick, AICP, CFM  
Planning & Zoning Administrator  
PO Box 1350  
Cascade, ID 83611  
208-382-7115 (phone)  
208-382-7119 (fax)  
[cherrick@co.valley.id.us](mailto:cherrick@co.valley.id.us)

# VAC 21-06



8/3/2021, 5:00:15 PM

- Parcel Boundaries
- All Road Labels
- Roads
- MAJOR
- MINOR COLLECTOR
- URBAN/RURAL
- PRIVATE



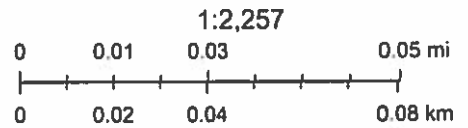
Maxar

# VAC 21-06

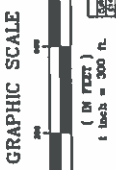


8/3/2021, 4:58:52 PM

- Parcel Boundaries
- Addresses
- All Road Labels
- Roads
- PRIVATE

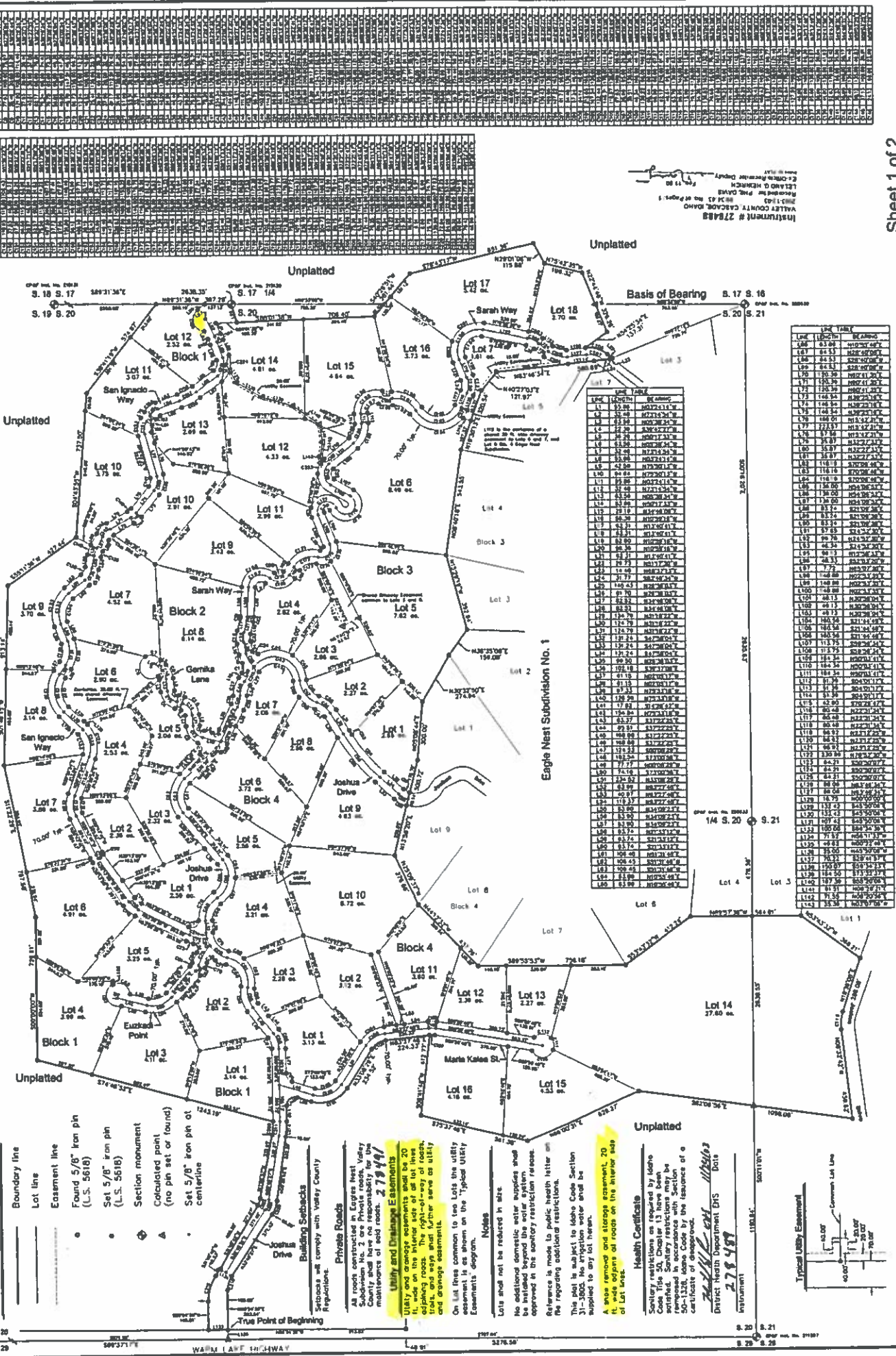


Maxar, Microsoft



# Eagle Nest Subdivision No. 2

Located in Sections 17, 20 and 21, T. 14 N., R. 4 E., B.M., Valley County, Idaho



- Legend**
- Boundary line
  - Lot line
  - Easement line
  - Found 5/8" iron pin (L.S. 5618)
  - Set 5/8" iron pin (L.S. 5618)
  - Section monument
  - Collocated point (no pin set or found)
  - Set 5/8" iron pin at centerline

**Private Roads**  
All roads constructed in Eagle Nest Subdivision No. 2 are Private roads. Valley County shall have no responsibility for the maintenance of said roads. **278484**

**Utility and Drainage Easements**  
Utility and drainage easements shall be 20 ft. wide on the interior set of all lots adjoining roads. The right-of-way of utility and drainage easements.

On Lot 13a common to Lot 13a the utility easement is shown on the typical utility easement diagram.

**Notes**  
Lots shall not be retained in site. No additional domestic water supplies shall be installed beyond the water system approved in the sanitary restriction release. Reference is made to public health letter on the regarding additional restrictions. This plat is subject to Idaho Code Section 21-3005. No irrigation water shall be supplied to any lot herein.

**Health Certificate**  
Sanitary restrictions are required by Idaho Code Title 20, Chapter 13 have been satisfied. Sanitary restrictions may be enforced in accordance with Section 20-2001. The absence of a certificate of disapproval.

District Health Department DHS Date **278484**

**Typical Utility Easement**

The diagram shows a 20-foot wide utility easement. It consists of a 10-foot wide utility line and a 10-foot wide strip on either side. The utility line is shown with a 4-inch diameter pipe and a 10-foot wide strip.

LINE	BEARING	DISTANCE	AREA
1	S. 17° 14' E.	115.80	13.12
2	N. 82° 46' W.	115.80	13.12
3	S. 17° 14' E.	115.80	13.12
4	N. 82° 46' W.	115.80	13.12
5	S. 17° 14' E.	115.80	13.12
6	N. 82° 46' W.	115.80	13.12
7	S. 17° 14' E.	115.80	13.12
8	N. 82° 46' W.	115.80	13.12
9	S. 17° 14' E.	115.80	13.12
10	N. 82° 46' W.	115.80	13.12
11	S. 17° 14' E.	115.80	13.12
12	N. 82° 46' W.	115.80	13.12
13	S. 17° 14' E.	115.80	13.12
14	N. 82° 46' W.	115.80	13.12
15	S. 17° 14' E.	115.80	13.12
16	N. 82° 46' W.	115.80	13.12
17	S. 17° 14' E.	115.80	13.12
18	N. 82° 46' W.	115.80	13.12
19	S. 17° 14' E.	115.80	13.12
20	N. 82° 46' W.	115.80	13.12
21	S. 17° 14' E.	115.80	13.12
22	N. 82° 46' W.	115.80	13.12
23	S. 17° 14' E.	115.80	13.12
24	N. 82° 46' W.	115.80	13.12
25	S. 17° 14' E.	115.80	13.12
26	N. 82° 46' W.	115.80	13.12
27	S. 17° 14' E.	115.80	13.12
28	N. 82° 46' W.	115.80	13.12
29	S. 17° 14' E.	115.80	13.12
30	N. 82° 46' W.	115.80	13.12
31	S. 17° 14' E.	115.80	13.12
32	N. 82° 46' W.	115.80	13.12
33	S. 17° 14' E.	115.80	13.12
34	N. 82° 46' W.	115.80	13.12
35	S. 17° 14' E.	115.80	13.12
36	N. 82° 46' W.	115.80	13.12
37	S. 17° 14' E.	115.80	13.12
38	N. 82° 46' W.	115.80	13.12
39	S. 17° 14' E.	115.80	13.12
40	N. 82° 46' W.	115.80	13.12
41	S. 17° 14' E.	115.80	13.12
42	N. 82° 46' W.	115.80	13.12
43	S. 17° 14' E.	115.80	13.12
44	N. 82° 46' W.	115.80	13.12
45	S. 17° 14' E.	115.80	13.12
46	N. 82° 46' W.	115.80	13.12
47	S. 17° 14' E.	115.80	13.12
48	N. 82° 46' W.	115.80	13.12
49	S. 17° 14' E.	115.80	13.12
50	N. 82° 46' W.	115.80	13.12
51	S. 17° 14' E.	115.80	13.12
52	N. 82° 46' W.	115.80	13.12
53	S. 17° 14' E.	115.80	13.12
54	N. 82° 46' W.	115.80	13.12
55	S. 17° 14' E.	115.80	13.12
56	N. 82° 46' W.	115.80	13.12
57	S. 17° 14' E.	115.80	13.12
58	N. 82° 46' W.	115.80	13.12
59	S. 17° 14' E.	115.80	13.12
60	N. 82° 46' W.	115.80	13.12
61	S. 17° 14' E.	115.80	13.12
62	N. 82° 46' W.	115.80	13.12
63	S. 17° 14' E.	115.80	13.12
64	N. 82° 46' W.	115.80	13.12
65	S. 17° 14' E.	115.80	13.12
66	N. 82° 46' W.	115.80	13.12
67	S. 17° 14' E.	115.80	13.12
68	N. 82° 46' W.	115.80	13.12
69	S. 17° 14' E.	115.80	13.12
70	N. 82° 46' W.	115.80	13.12
71	S. 17° 14' E.	115.80	13.12
72	N. 82° 46' W.	115.80	13.12
73	S. 17° 14' E.	115.80	13.12
74	N. 82° 46' W.	115.80	13.12
75	S. 17° 14' E.	115.80	13.12
76	N. 82° 46' W.	115.80	13.12
77	S. 17° 14' E.	115.80	13.12
78	N. 82° 46' W.	115.80	13.12
79	S. 17° 14' E.	115.80	13.12
80	N. 82° 46' W.	115.80	13.12
81	S. 17° 14' E.	115.80	13.12
82	N. 82° 46' W.	115.80	13.12
83	S. 17° 14' E.	115.80	13.12
84	N. 82° 46' W.	115.80	13.12
85	S. 17° 14' E.	115.80	13.12
86	N. 82° 46' W.	115.80	13.12
87	S. 17° 14' E.	115.80	13.12
88	N. 82° 46' W.	115.80	13.12
89	S. 17° 14' E.	115.80	13.12
90	N. 82° 46' W.	115.80	13.12
91	S. 17° 14' E.	115.80	13.12
92	N. 82° 46' W.	115.80	13.12
93	S. 17° 14' E.	115.80	13.12
94	N. 82° 46' W.	115.80	13.12
95	S. 17° 14' E.	115.80	13.12
96	N. 82° 46' W.	115.80	13.12
97	S. 17° 14' E.	115.80	13.12
98	N. 82° 46' W.	115.80	13.12
99	S. 17° 14' E.	115.80	13.12
100	N. 82° 46' W.	115.80	13.12